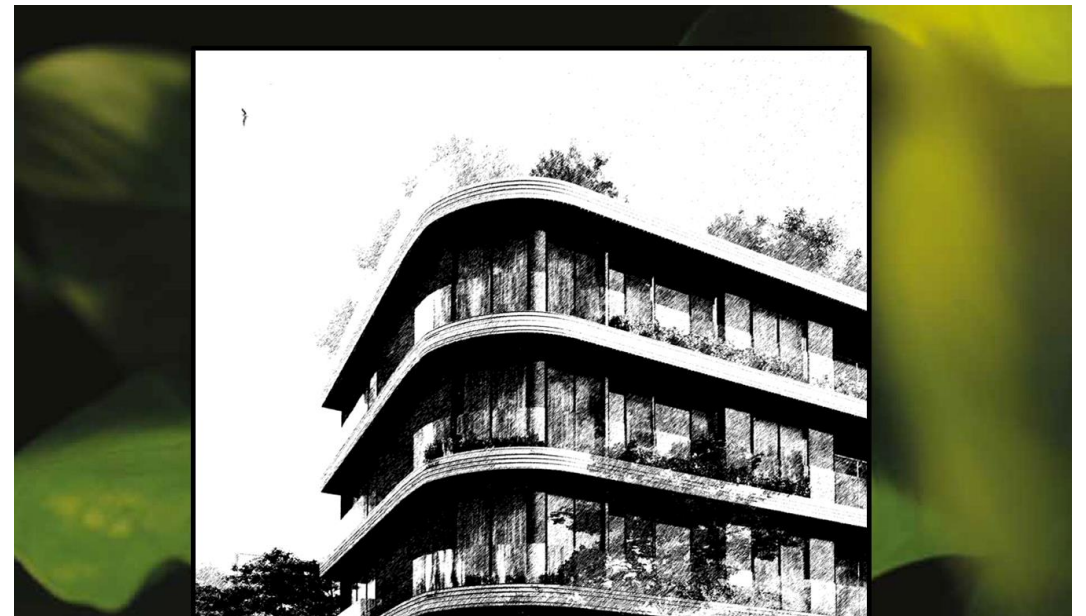




GAYATRI

**SRIRAM NAGAR NORTH STREET,
ALWARPET, CHENNAI-18**



KAMATCHI NAGAR ROAD

ENTRY GATE

SECURITY CABIN

D3

BUILDING LINE

DUCT



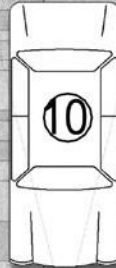
EX F



EX F



4



ELECTRICAL ROOM
19' 9" X 13' 3"

LIFT LOBBY
8' 0" X 7' 3"

LIFT
9' 0" X 6' 9"

UP

DN



CARE TAKER ROOM
7' 9" X 5' 0"

V1

MALE TOILET
5' 6" X 5' 0"

D3

FEMALE TOILET
6' 0" X 5' 0"

D3

SW1

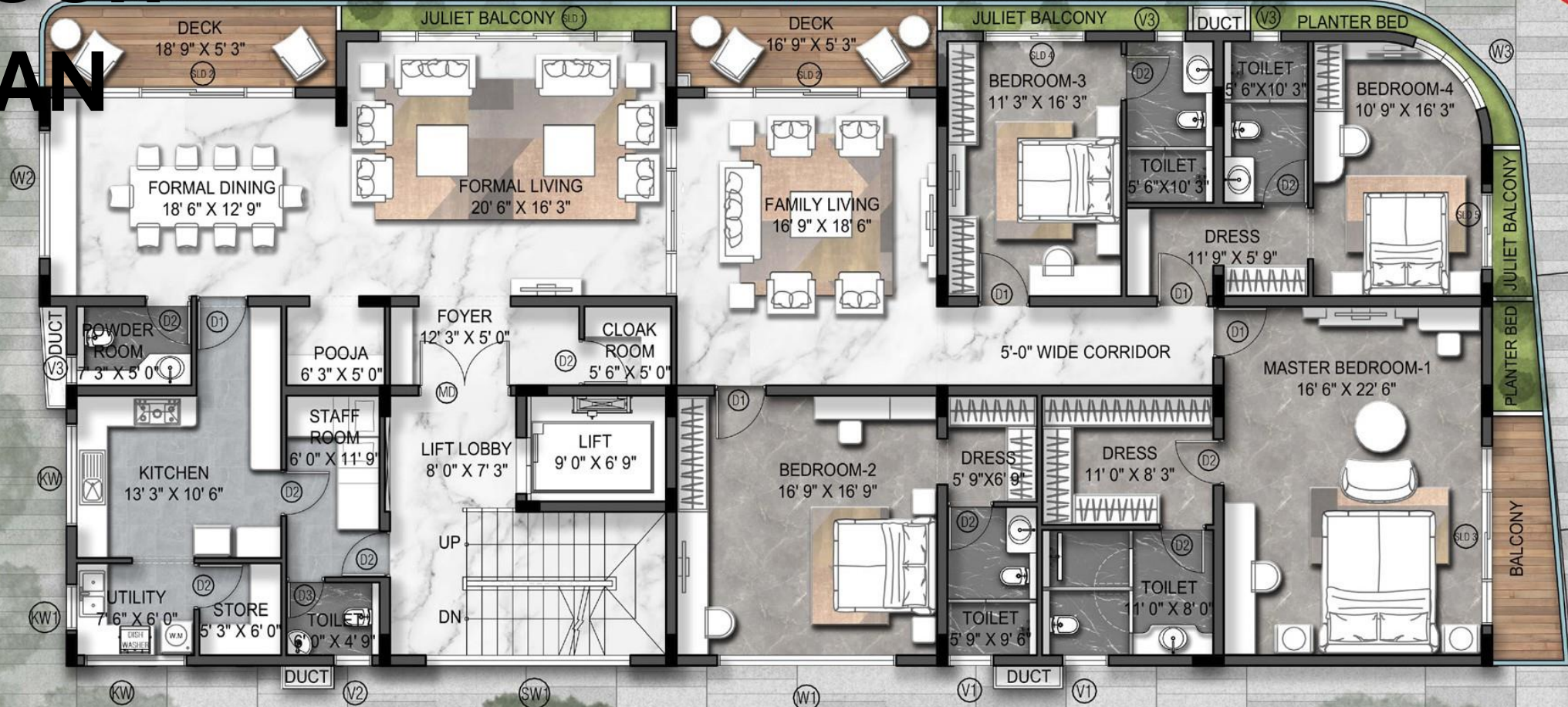


1st

4BHK Apartment

Saleable Area : 4,523 sqft.

FLOOR PLAN





Specifications

STRUCTURE

- Seismic zone III compliant RCC frame structure.
- Solid concrete block masonry.
- Stone cladding on sections of external wall faces.

FLOORING & TILES

Foyer; Living; Dining

- Imported marble with coordinated skirting.
- Bedrooms
- Imported marble with coordinated skirting.

Kitchen

- 2'*2' Vitrified tiles with coordinated skirting
- 1'*2' backsplash glazed tile up to 2' above counter

Balcony

- 2'*2' Vitrified tiles with coordinated skirting.

Utility

- 2'*2' Vitrified non-skid tiles with suitable dado 1'*2" in wet area up to 3' height.

Toilets

- 1'*2' Vitrified non-skid tiles with suitable dado up to ceiling height.

Terrace Decks

- All-weather proof tiles.

Specifications



KITCHEN & UTILITY

- Polished black granite platform with double nose edge at ergonomic 32"
- from the floor, over RCC counter supported by suitable brickwork.
- Stainless steel single bowl sink and draining board in kitchen and utility of Nirali or equivalent make.
- Provision for exhaust.

DOOR, WINDOWS & RAILINGS

- Main door
- 7'6" Height –Solid Timber Teak wood door shutter along with suitable frame. Doors Melamine polished finish. Yale or equivalent brand lock with Stainless Steel fittings.

Internal Door

- 7'6" Height – Factory finished 32mm thick Veneer door shutter along with suitable frame. Yale or equivalent brand Locks with Stainless Steel fittings. For Toilet Doors – One side Veneer and other side – Painted or laminated.

Windows

- Aluminium sliding, clear glass frames & bug screens with Saint- Gobain glass or equivalent.

French Door

- Schuco/ equivalent sliding, clear glass frames & bug screens with Saint- Gobain glass or equivalent.

Grills

- MS Grills fixed on to the walls. Zinc Chromate Anti corrosive primer with Enamel Paint.

Specifications



SANITARYWARE & PLUMBING

Sanitary ware

- Grohe / Duravit / Roca or equivalent. EWC wall mounted with concealed tank, Counter wash basin in all Bedroom Toilets & Powder room.

C.P. Fittings

- Grohe / Roca or equivalent.

Plumbing

- Single lever hot and cold-water mixer unit for high pressure showers.
- Concealed master-controlled stop cock in each restroom on the inside for easy maintenance.
- Provision for Geyser in all the toilets.
- Hot water connection in all wash basins.
- Hot water connections in the Kitchen.

SURFACE FINISHES

Internal Walls:

- Finished with Asian putty, one coat of primer, two coats of Asian paint emulsion with roller finish.

Internal ceilings:

- Finished with Asian putty, emulsion (Asian Paints) roller finish.

Exterior walls:

- Weatherproof exterior emulsion



Specifications

ELECTRICAL DISTRIBUTION & WIRING

- TV, telephone and modem points in all bedrooms and living room.
- Electrical distribution & concealed wiring suitable for 3-phase power supply.
- Fire-resistant electrical wires of Finolex or Anchor make.
- Switches and sockets of Scheneider/Legrand or equivalent make.
- Air-conditioning points in all rooms.
- One MCB for each room in the main distribution box in each residence.
- Three phase power supply.

All products like switches and accessories PVC conduits, switchgear, wiring cable etc. are compliant with IS code of Practice for electrical wiring.



Specifications

COMMON AREAS

Ground floor lobby:

- Polished granite combination design flooring with matched skirting.

Upper floor lobbies:

- Polished granite slab with matched skirting.
- Stone cladding around elevator.

Staircases:

- Granite flooring with skirting
- 3 Handrails with MS grill work

External areas:

- Paving with granolithic flooring/concrete interlock pavers.
- Brick kerbs and drains along the compound wall to divert rainwater to rain harvesting pit.

Landscaping:

- Landscaped garden with seating.
- Greenery along compound wall, and on terrace.

Elevator:

- One 10 passenger capacity elevator of Mitsubishi or equivalent make.

Generator:

- 100% power backup with generator of suitable rating to support all electrical requirement including air-conditioning.

SECURITY

- Access control lobby doors.
- CCTV cameras in common areas.
- Video doorbell.

**Site Address:
Old No. 19, New No. 38,
North Street,
Sriram Nagar, Alwarpet,
Chennai-600 018.**

For bookings

- Contact: 044 42138851/8056118811
- info@chaitanyafoundations.com
- www.chaitanyafoundations.com

